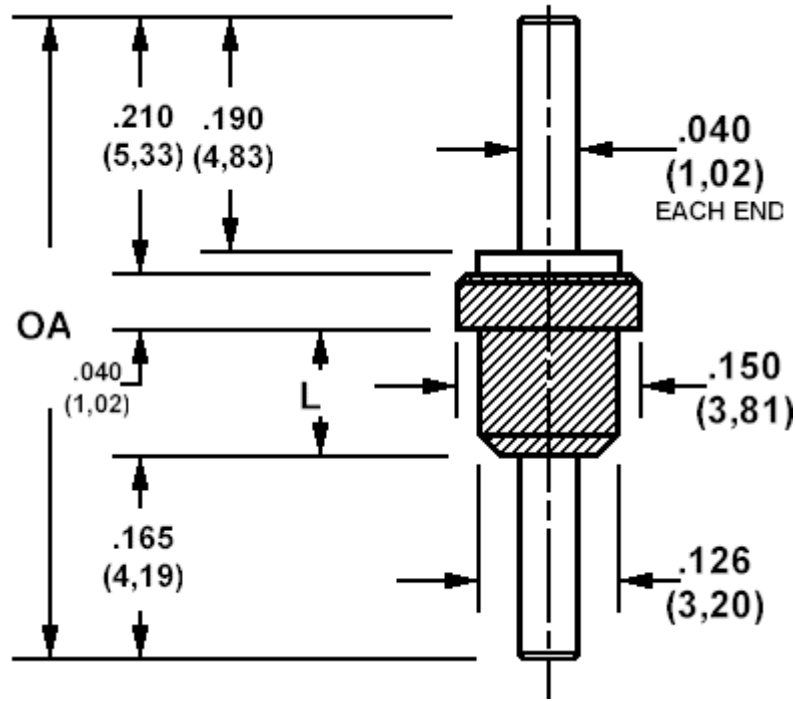


## 571-4161 Insulated solder terminal, Feed thru

Recommended mounting hole .113 (2,87)



### How to order code

**571-4161-XX-YY-19**

Basic Part No (XX = Panel thickness, YY = plating finish. See tables for options)

Basic Part No.		OA(ref)	L	Panel Thickness (XX)
571-4161	-01	.475 (12,07)	.060 (1,52)	.016 (0,40) only
	-02	.515 (13,08)	.100 (2,54)	.031 (0,79) to .062 (1,59)

Component	Material	Finish (YY)	
		-01	-05
Terminal	Brass	Silver	Electro Solder
Insulator	Teflon - white		

Additional Specifications	Panel thickness	
	-01	-02
Flashover VRMS at Sea Level	3000	3000
Capacitance (pF)	0.7	0.8

Teflon is a registered trademark of Dupont