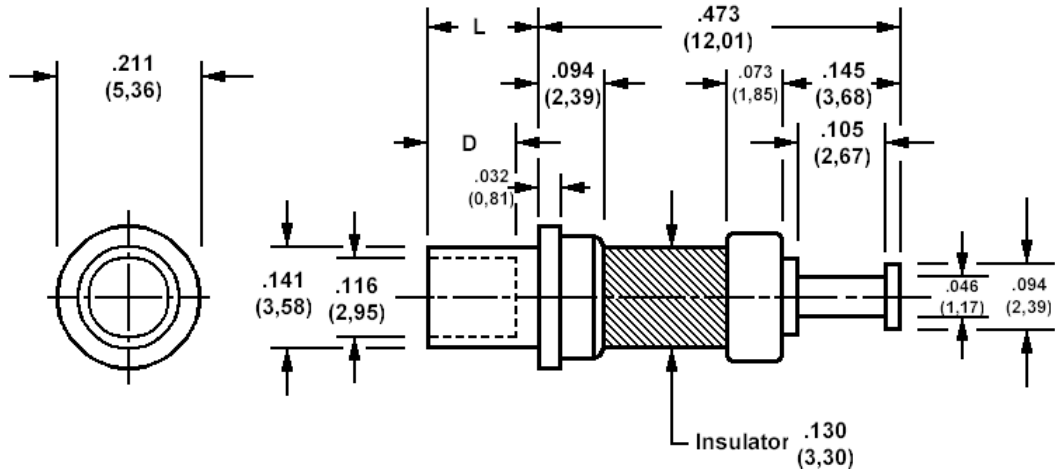


570-3481 Insulated solder terminal, Turreted



How to order code

570-3481-XX-YY-00

Basic Part No (XX = panel thickness, YY = plating finish. See tables for options)

| Basic Part No. | XX | L | For Panel Thickness | D |
|----------------|-----|-------------|---------------------|-------------|
| 570-3481 | -01 | .062 (1,57) | .031 (0,79) | .062 (1,57) |
| | -02 | .094 (2,39) | .062 (1,59) | .062 (1,57) |
| | -03 | .105 (2,67) | .078 (1,98) | .093 (2,36) |
| | -04 | .125 (3,18) | .094 (2,38) | .109 (2,77) |
| | -05 | .156 (3,96) | .125 (3,18) | .109 (2,77) |

| Component | Material | Finish (YY) | |
|-----------|----------|-------------|----------------|
| | | -03 | -05 |
| Terminal | Brass | Gold | Electro Solder |
| Stud | Brass | Nickel | Nickel |
| Insulator | Ceramic | | |

| Additional Specifications | |
|--|------|
| Dielectric Withstanding Voltage (VRMS) | 3300 |

| Recommended Spinning Tools | |
|----------------------------|-------------------|
| Anvil | 435-6803-01-00-00 |
| Tool | 435-6851-01-00-00 |