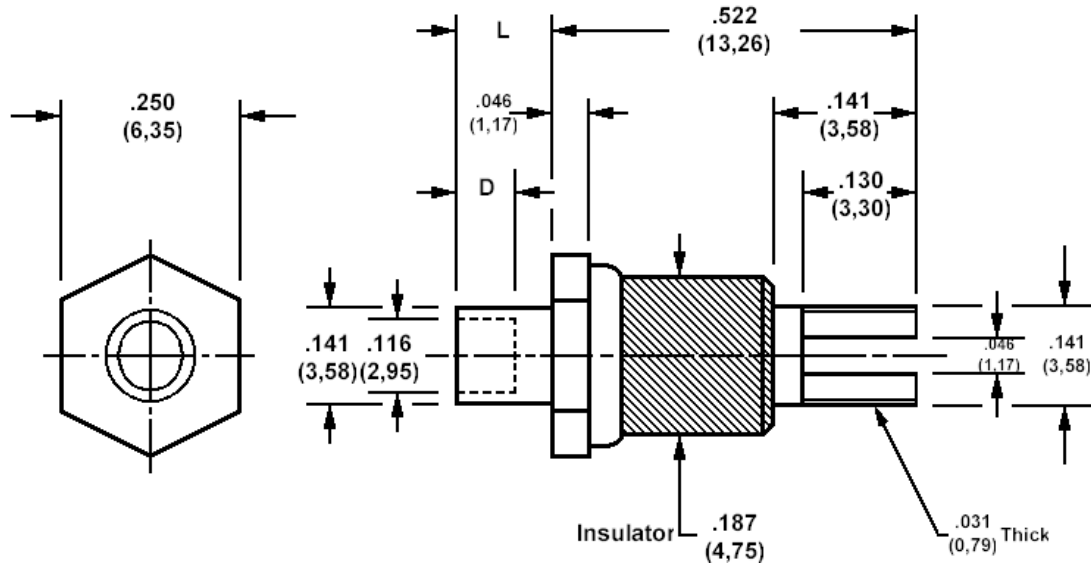


## 570-2431 Insulated solder terminal, Slotted



### How to order code

**570-2431-XX-YY-00**

Basic Part No (XX = panel thickness, YY = plating finish. See tables for options)

Basic Part No.	XX	L	For Panel Thickness	D
570-2431	-01	.062 (1,57)	.031 (0,79)	.062 (1,57)
	-02	.094 (2,39)	.062 (1,59)	.062 (1,57)
	-03	.105 (2,67)	.078 (1,98)	.093 (2,36)
	-04	.125 (3,18)	.094 (2,38)	.109 (2,77)
	-05	.156 (3,96)	.125 (3,18)	.109 (2,77)

Component	Material	Finish (YY)	
		-01	-05
Terminal	Brass	Silver	Electro Solder
Stud	Brass	Cadmium (plus Chromate)	Cadmium (plus Chromate)
Insulator	Ceramic		

### Additional Specifications

Dielectric Withstanding Voltage (VRMS)	2500
--	------

### Recommended Spinning Tools

Anvil	435-6802-01-00-00
Tool	435-6851-01-00-00