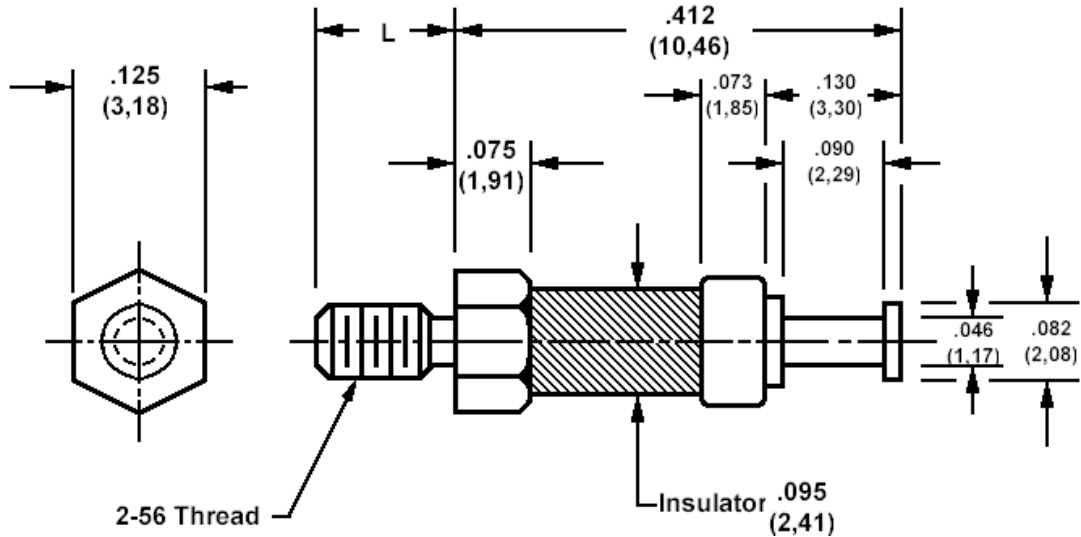


570-2255, Insulated solder terminal, Turreted



How to order code

570-2255-XX-YY-00

Basic Part No (XX = thread length, YY = plating finish. See tables for options)

Basic Part No.	XX	L
572-4870	-01	.125 (3,18)
	-02	.188 (4,78)
	-03	.250 (6,35)

Component	Material	Finish (YY)	
		-03	-05
Terminal	Brass	Gold	Electro Solder
Stud	Brass	Nickel	Nickel
Insulator	Ceramic		

Additional Specifications	
Dielectric Withstanding Voltage (VRMS)	2000