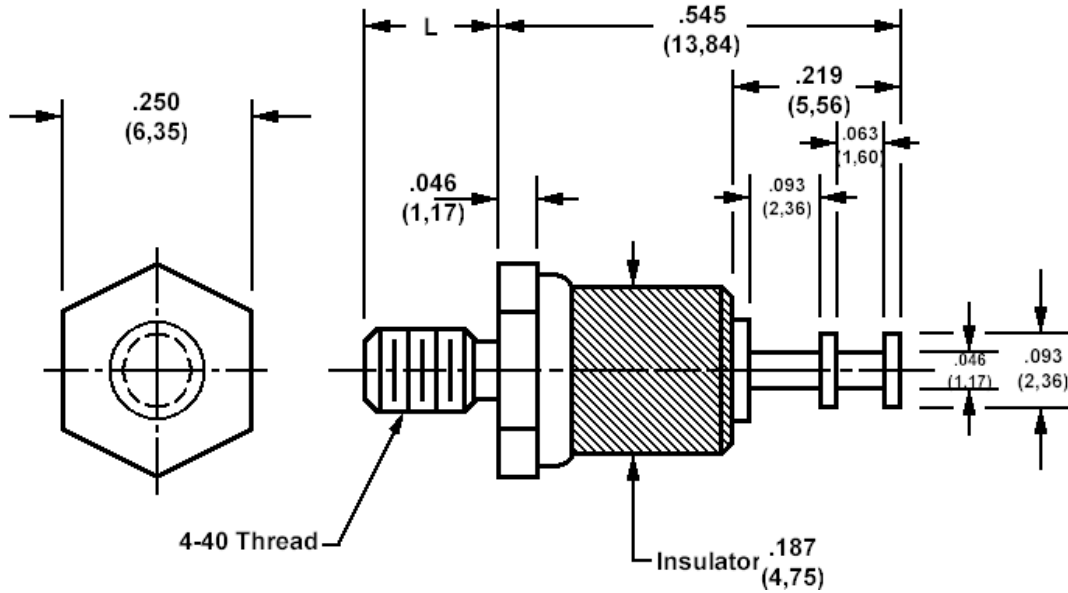


570-2045 Insulated solder terminal, Turreted



How to order code
570-2045-XX-YY-00

Basic Part No XX = thread length, YY = plating finish (See tables for options)

Basic Part No.	XX	L
570-2045	-01	.250 (6,35)
	-02	.375 (9,53)

Component	Material	Finish (YY)	
		-01	-05
Terminal	Brass	Silver	Electro Solder
Stud	Brass	Cadmium (plus chromate)	Cadmium (plus chromate)
Insulator	Ceramic		
Mounting Hex Nut	Brass	Cadmium (plus chromate)	
Tooth Lock Washer	Phosphor Bronze	Cadmium (plus chromate)	

Additional Specifications	
Dielectric Withstanding Voltage (VRMS)	2500