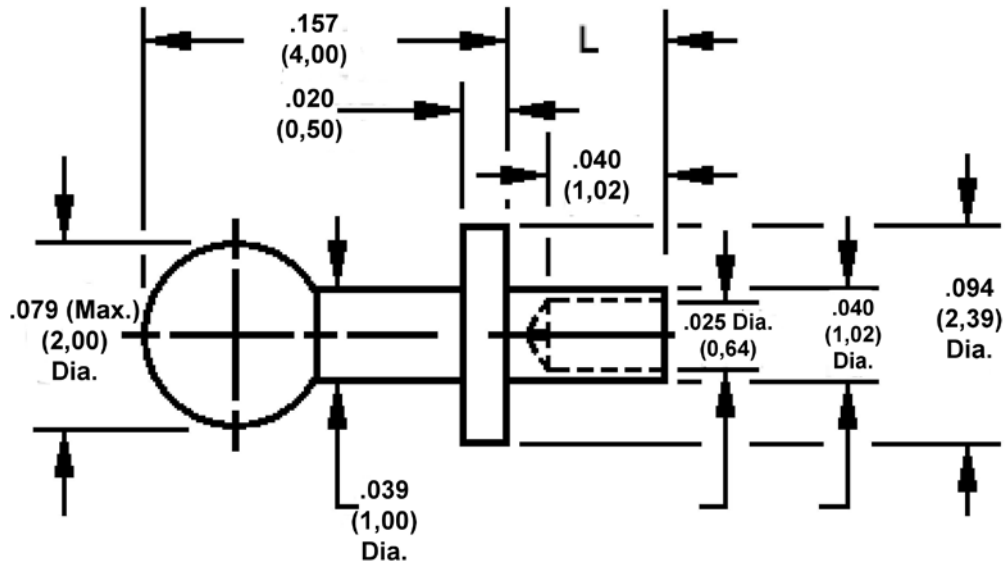


460-8452 Connectaball, Swage Mount

Recommended mounting hole .043 (1,10) ± .002 (0,05)



How to order code

460-8452-XX-YY-00

Basic Part No XX = Board Thickness, YY = Plating finish

DIMENSIONS		
Dash No (XX)	'L'	Board Thickness
-01	.051 (1,30)	.031 (0,79)
-02	.082 (2,08)	.062 (1,57)
-03	.113 (2,87)	.094 (2,39)

MATERIALS					
Component	Material	Finish (-01)	Finish (-03)	Finish (-93)	Finish (-04)
Terminal	Brass	Silver	Gold over Nickel		Electro Tin
			50µ" (1,25µM) Au	10µ" (0,25µM) Au	

TOOLING	
Anvil	435-8053-01-00-00
Flare Punch	435-6690-01-00-00