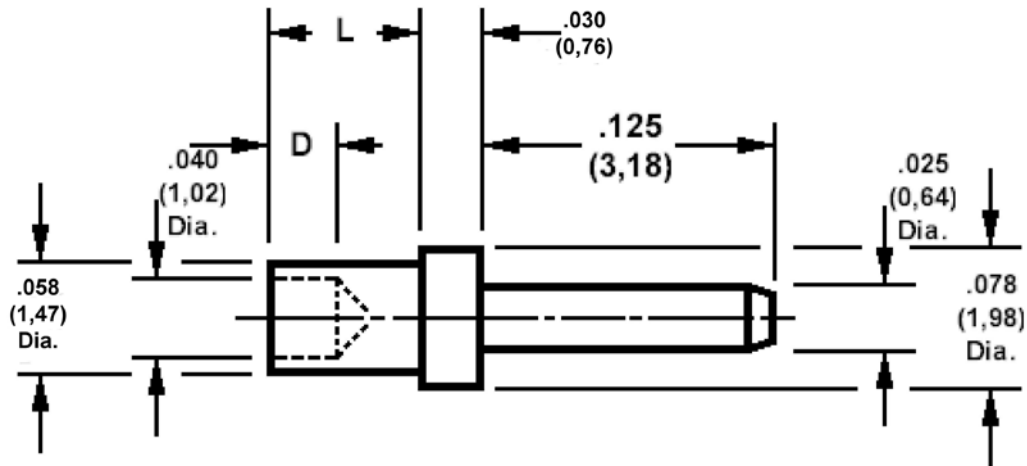


460-3393 Swage Mount, .025 (0,64) Diameter Pin.

Recommended mounting hole .062 (1,57) ± .002 (0,05)



How to order code
460-3393-XX-YY-00

Basic Part No XX = L dimension, YY = Plating Finish

DIMENSIONS (XX)				
Basic Part Number	(XX)	L	For Board Thickness	D
460-3393	-01	.062 (1,57)	.031 (0,79)	.040 (1,02)
	-02	.094 (2,39)	.062 (1,57)	.062 (1,57)
	-03	.125 (3,18)	.094 (2,39)	.062 (1,57)
	-04	.156 (3,96)	.125 (3,18)	.062 (1,57)

MATERIALS			
Component	Material	Finish (-03)	Finish (-04)
Pin	Brass	Gold over Nickel	Electro Tin

SWAGE TOOLING	
Recommended Swaging Tools:-	
Anvil	435-6474-01-00-00
Roll Punch	435-6642-01-00-00
Flare Punch	435-6657-01-00-00