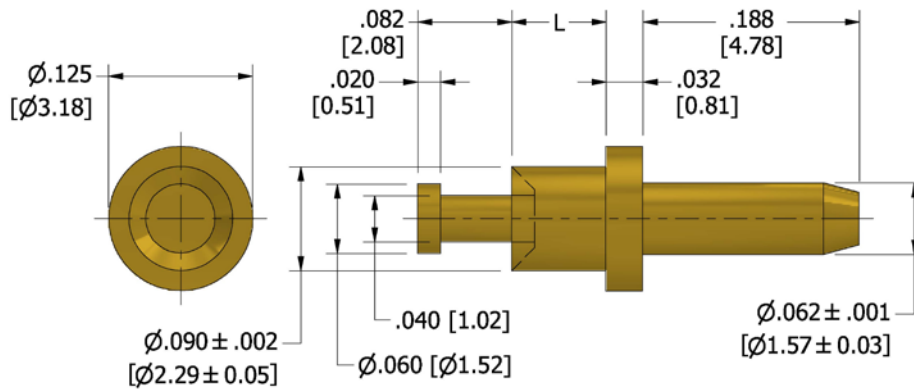


460-3205 Swage Mount, .062 (1,57) Diameter Pin

Recommended mounting hole .094 (2,93) ± .002 (0,05)



How to order code

460-3205-XX-YY-00

Basic Part No XX = L dimension, YY = Plating Finish

DIMENSIONS (XX)			
Basic Part Number	(XX)	L	Board Thickness
460-3205	-02	.082 (2,08)	.062 (1,57)
	-03	.113 (2,87)	.094 (2,39)

MATERIALS			
Component	Material	Finish (-03)	Finish (-04)
Pin	Brass	Gold over Nickel	Electro Tin

SWAGE TOOLING	
Recommended Swaging Tools:-	
Anvil	435-6430-01-00-00
Roll Punch	435-6654-01-00-00