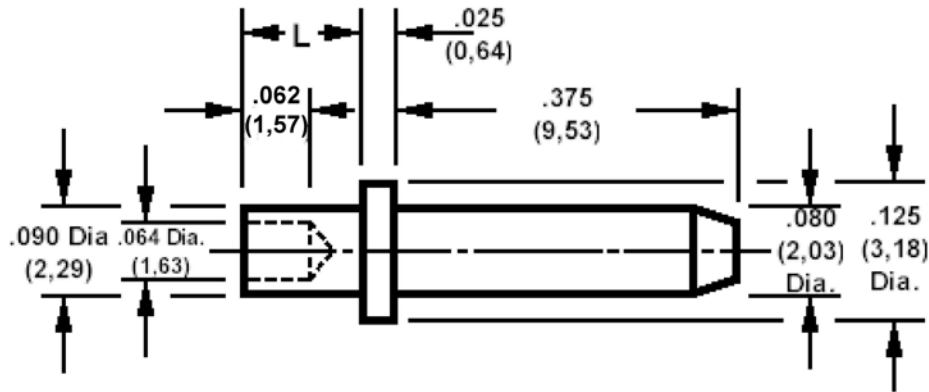


460-2629 Swage Mount, .080 (2,03) Diameter Pin

Recommended mounting hole .094 (2,39) ± .002 (0,05).



How to order code

460-2629-XX-YY-00

Basic Part No XX = L dimension, YY = Plating Finish

MATERIALS

Component	Material	Finish (-03)	Finish (-04)
Pin	Brass	Gold over Nickel	Electro Tin

DIMENSIONS

Basic Part Number	(XX)	L	Board Thickness
460-2629	-02	.094 (2,39)	.062 (1,57)
	-03	.125 (3,18)	.094 (2,39)
	-04	.156 (3,96)	.125 (3,18)

SWAGE TOOLING

Recommended Swaging Tools:-	
Anvil	435-6523-01-00-00
Flare Punch	435-6663-01-00-00