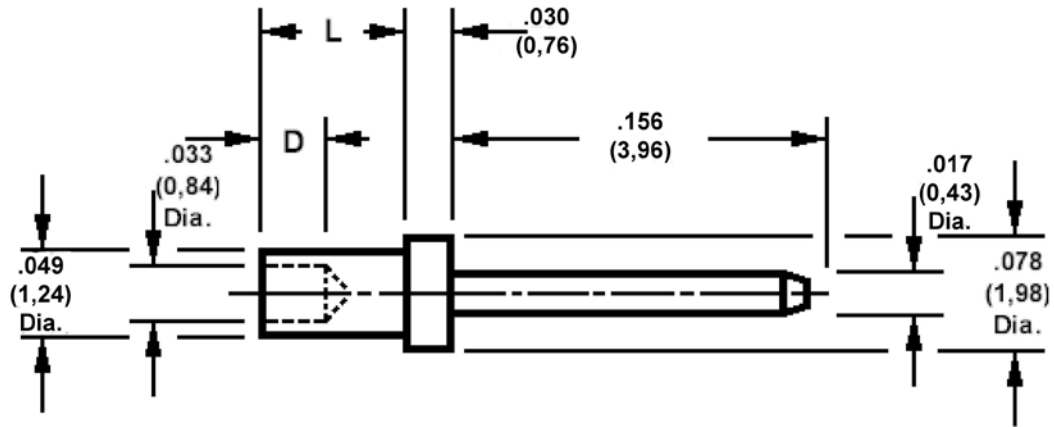


460-2599 Swage Mount, .016 (0,43) Diameter Pin

Recommended mounting hole .052 (1,32) ± .002 (0,05), #55 drill



How to order code

460-2599-XX-YY-00

Basic Part No XX = L dimension, YY = Plating Finish

DIMENSIONS (XX)				
Basic Part Number	(XX)	L	For Board Thickness	D
460-2599	-01	.051 (1,30)	.031 (0,79)	.035 (0,89)
	-02	.082 (2,08)	.062 (1,57)	.062 (1,57)
	-03	.113 (2,87)	.094 (2,39)	.062 (1,57)
	-04	.145 (3,68)	.125 (3,18)	.062 (1,57)

MATERIALS			
Component	Material	Finish (-03)	Finish (-04)
Pin	Brass	Gold over Nickel	Electro Tin

SWAGE TOOLING	
Recommended Swaging Tools:-	
Anvil	435-6496-01-00-00
Flare Punch	435-6657-01-00-00