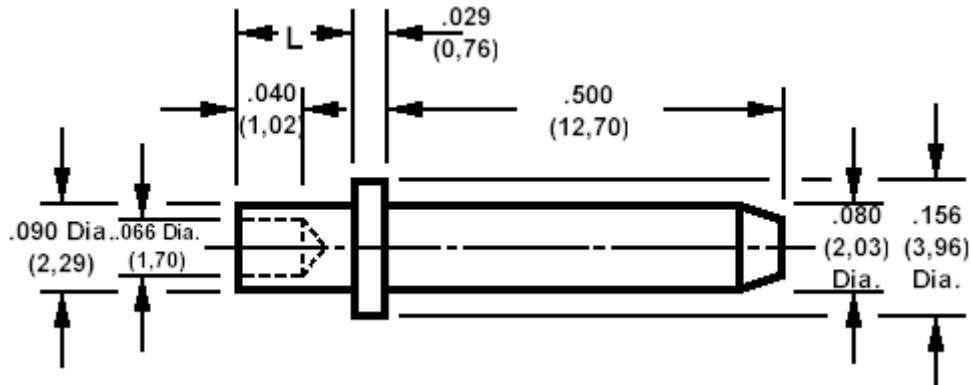


**460-1524 Swage Mount, .080 (2,03) Diameter Pin**

Recommended mounting hole .094 (2,39) ± .002 (0,05).



How to order code  
**460-1524-XX-YY-00**

Basic Part No XX = L dimension, YY = Plating Finish

MATERIALS			
Component	Material	Finish (-03)	Finish (-04)
Pin	Brass	Gold over Nickel	Electro Tin

DIMENSIONS			
Basic Part Number	(XX)	L	Board Thickness
460-1524	-01	.051 (1,30)	.031 (0,79)
	-02	.082 (2,08)	.062 (1,57)
	-03	.113 (2,87)	.094 (2,39)

SWAGE TOOLING	
Recommended Swaging Tools:-	
Anvil	435-6523-02-00-00
Flare Punch	435-6663-01-00-00

Due to pin length, these pins cannot be swaged using bench press 435-3803-01-00-00