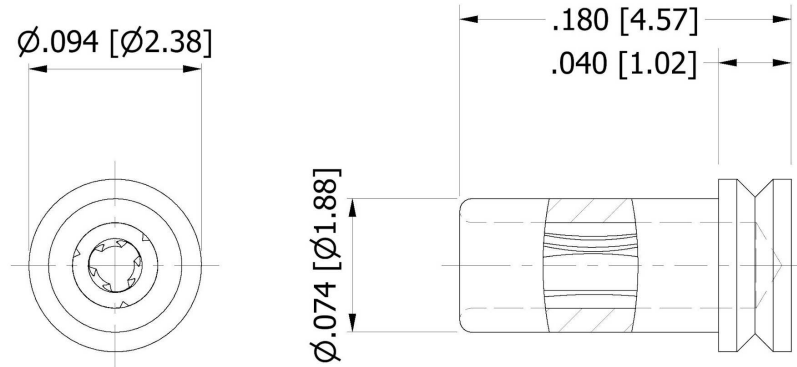


450-8325 Surface Mount Socket, for .025 [0.64] Diameter Pins

Min hole depth .141 [3.58]

How to order code
450-8325-01-XX-00
Basic Part No XX = Finish

| MATERIALS | | | | |
|------------------|------------------|---------------------|---------------------|---------------------|
| Component | Material | Finish (-03) | Finish (-04) | Finish (-06) |
| Body | Brass | Gold over Nickel | Electro Tin | Electro Tin |
| Spring | Beryllium copper | Gold over Nickel | Electro Tin | Gold over Nickel |

Dimensions in inches [mm]

Tolerance unless otherwise stated $\pm .005$ [0.13]