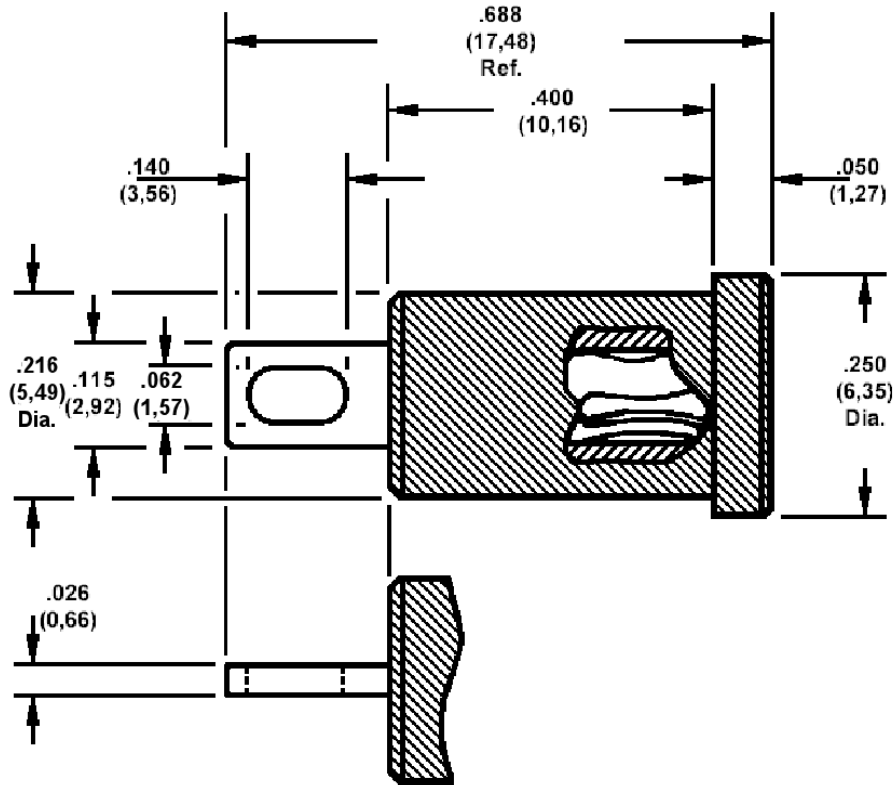


**450-4354 PTFE Insulated, Press Mount Socket,
 for .080 (2,03) Diameter Pins**

Recommended mounting hole .203 (5,16) ± .002 (0,05).



This tab is .026 (0,66) thick

Min hole depth .332 (8,43)

How to order code

450-4354-01-XX-YY

Basic Part No XX = Plating, YY = Colour

MATERIALS				
Component	Material	Finish (-03)	Finish (-04)	Finish (-06)
Body	Brass	Gold over Nickel	Electro Tin	Electro Tin
Spring	Beryllium copper	Gold over Nickel	Electro Tin	Gold over Nickel
Insulator	PTFE	Select colour (see below)		

COLOURS (YY)			
-10	-12	-16	-19
Black	Red	Blue	White

Select colour (others available to order, consult factory)

ADDITIONAL INFORMATION			
Basic Part No	For Panel Thickness	Flashover at sea level (VRMS)	Capacitance pF
450-4354-01-03-XX	.031 (0,79) to .125 (3,18)	2000	1,2