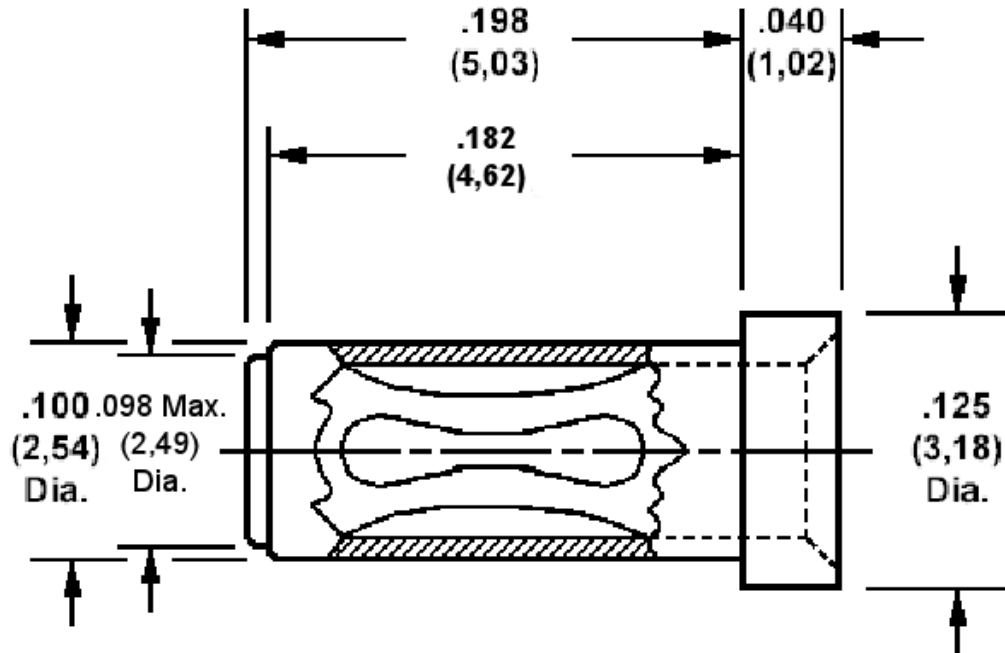


450-3783 Guided Entry Socket, Solder Mount, for .040 (1,02) Diameter Pins

Recommended mounting hole .104 (2,64) ± .002 (0,05), #37 drill



Min hole depth .210 (5,33).

How to order code
450-3783-01-XX-00
 Basic Part No XX = Finish

MATERIALS				
Component	Material	Finish (-03)	Finish (-04)	Finish (-06)
Body	Brass	Gold over Nickel	Electro Tin	Electro Tin
Spring	Beryllium copper	Gold over Nickel	Electro Tin	Gold over Nickel