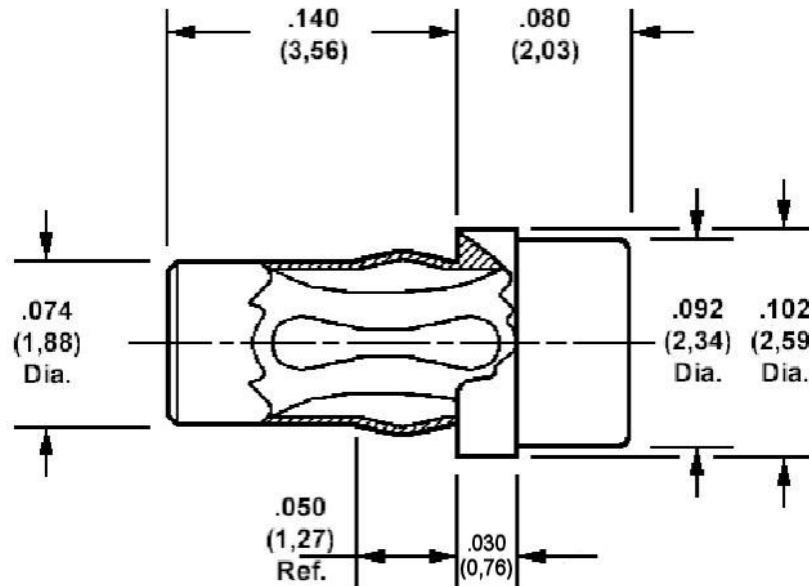


450-3752 Press Mount Socket, for .040 (1,02) Diameter PinsRecommended mounting hole $.076 (1,93) \pm .001 (0,03)$, #48 drillMin hole depth $.185 (4,70)$

How to order code

450-3752-01-XX-00

Basic Part No XX = Finish

MATERIALS

Component	Material	Finish (-03)	Finish (-04)	Finish (-06)
Body	Brass	Gold over Nickel	Electro Tin	Electro Tin
Spring	Beryllium copper	Gold over Nickel	Electro Tin	Gold over Nickel