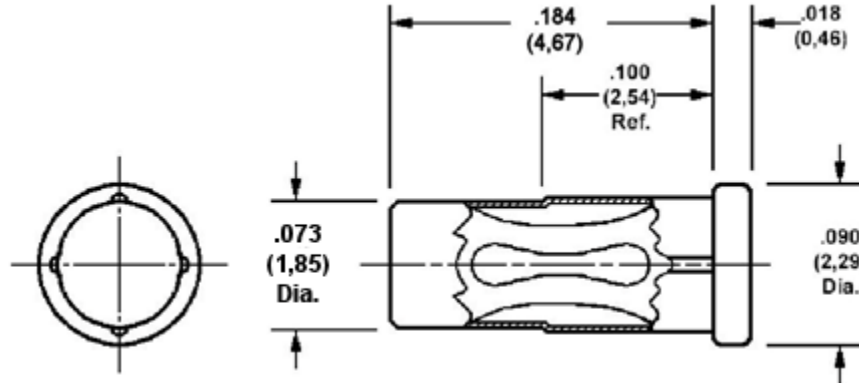


450-3729 Press Mount, for .040 (1,02) Diameter Pins

Recommended mounting hole .076 (1,93) ±.001 (0,03), #48 drill



Min hole depth .190 (4,85)

How to order code

450-3729-01-XX-00

Basic Part No XX = Finish

MATERIALS				
Component	Material	Finish (-03)	Finish (-04)	Finish (-06)
Body	Copper	Gold over Nickel	Electro Tin	Electro Tin
Spring	Beryllium copper	Gold over Nickel	Electro Tin	Gold over Nickel