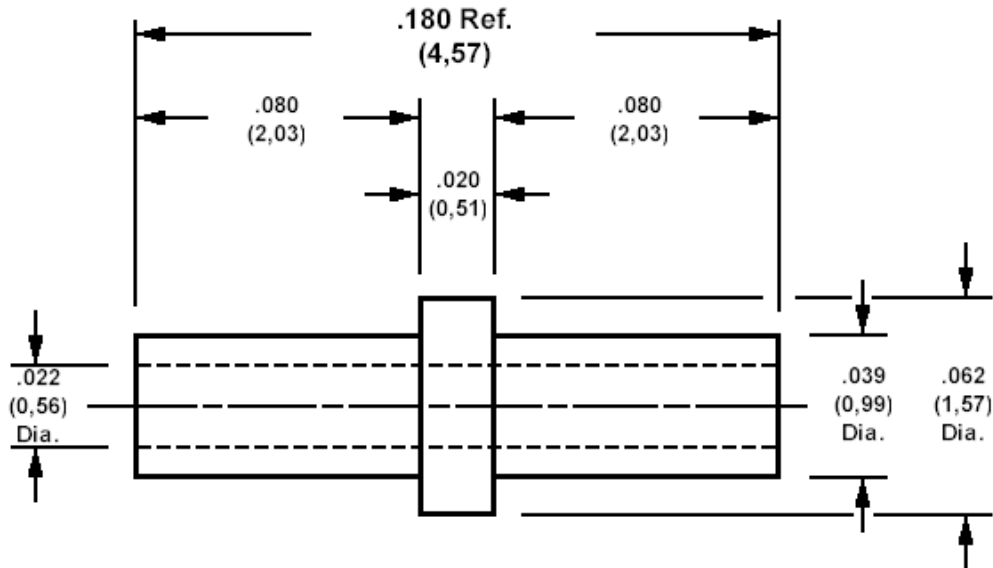


**180-1459 Solder Terminal, Eyelet, Thru Hole**

Recommended mounting hole .043 (1,09), #57 drill



For Board Thickness .062 (1,57), for 27-25 AWG wire

**How to order code**

**180-1459-02-YY-00**

Basic Part No YY = Plating Finish

MATERIALS		
Component	Material	Finish (YY)
		-05
Terminal	Brass	Electro Solder

SWAGE TOOLING	
Recommended Swaging Tools:-	
Anvil	435-6443-01-00-00
Roll Punch	435-6642-01-00-00