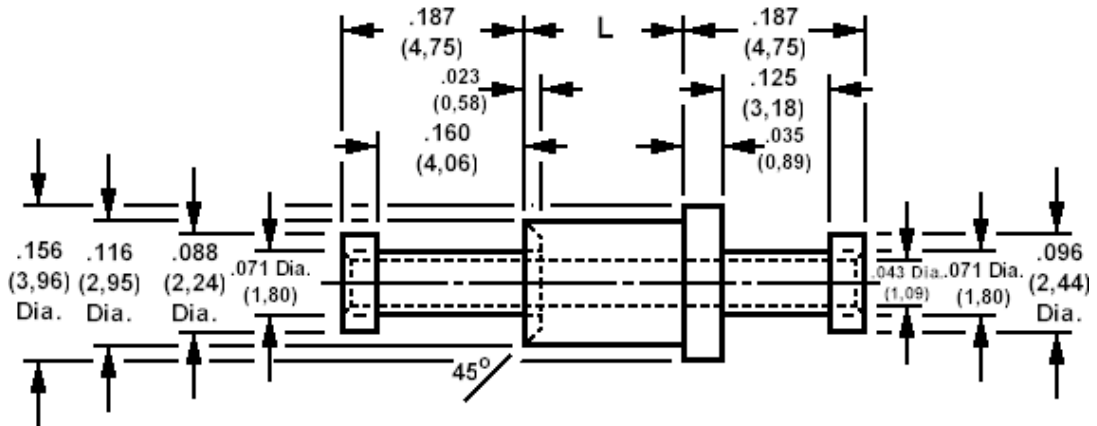


160-2141 Solder Terminal, Turreted, Feed Thru, Thru Hole,

Recommended mounting hole .120 (3,05), #31 drill



How to order code

160-2141-XX-YY-00

Basic Part No XX = L dimension, YY = Plating Finish

DIMENSIONS (XX)			
Basic Part No	(XX)	L	Board Thickness
160-2141	-01	.063 (1,60)	.031 (0,79)
	-02	.094 (2,39)	.062 (1,57)
	-03	.125 (3,18)	.094 (2,39)
	-04	.156 (3,96)	.125 (3,18)

MATERIALS			
Component	Material	Finish (YY)	
		-01	-05
Terminal	Brass	Silver	Electro Solder

SWAGE TOOLING	
Recommended Swaging Tools:-	
Anvil	435-6432-01-00-00
Roll punch	435-6620-01-00-00