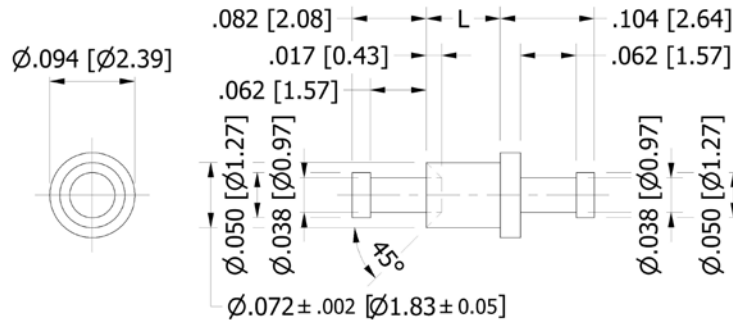


160-2042 Solder Terminal, Turreted, Feed Thru,

Recommended mounting hole $\varnothing.076 \pm .001$ ($\varnothing 1.93 \pm 0.03$), #48 drill



How to order code

160-2042-XX-YY-00

Basic Part No XX = L dimension, YY = Plating Finish

DIMENSIONS (XX)			
Basic Part No	(XX)	L	Board Thickness
160-2042	-01	.051 (1,30)	.031 (0,79)
	-02	.082 (2,08)	.062 (1,57)
	-03	.113 (2,87)	.094 (2,39)
	-04	.145 (3,68)	.125 (3,18)
	-05	.207 (5,26)	.188 (4,78)

MATERIALS			
Component	Material	Finish (YY)	
Terminal	Brass	-01	-05
		Silver	Electro Solder

SWAGE TOOLING	
Recommended Swaging Tools:-	
Anvil	435-6420-01-00-00
Roll punch	435-6618-01-00-00

Dimensions in inches [mm]
 Tolerance unless otherwise stated $\pm .003$ [0.08]