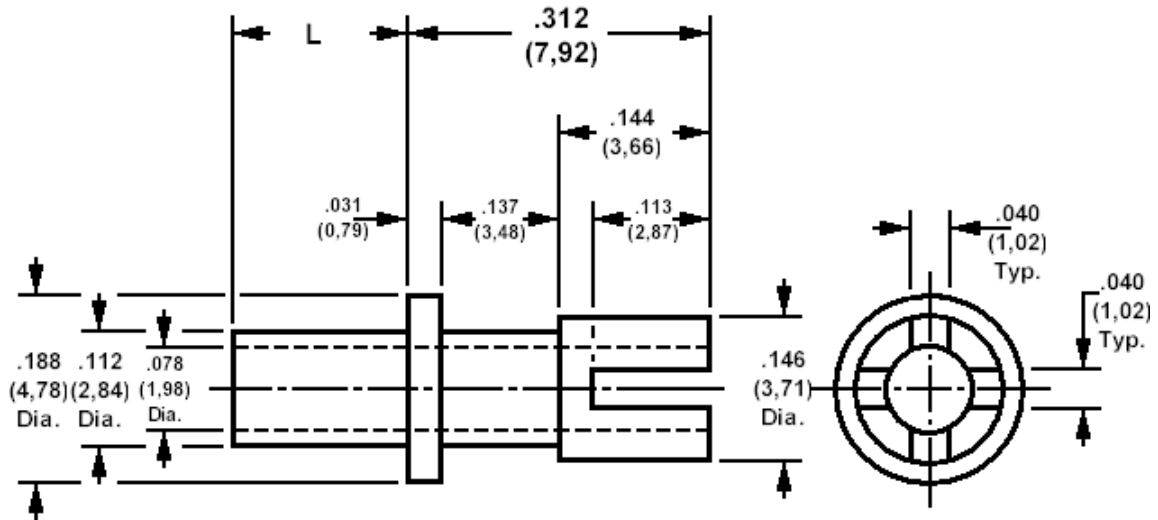


140-1010 Solder Terminal, Castellated, Thru Hole, Slotted

Recommended mounting hole .116 (2,95), #32 drill



How to order code

140-1010-XX-YY-00

Basic Part No XX = L dimension, YY = Plating Finish

DIMENSIONS (XX)			
Basic Part No	(XX)	L	Board Thickness
140-1010	-01	.078 (1,98)	.031 (0,79)
	-02	.109 (2,77)	.063 (1,60)
	-03	.141 (3,58)	.094 (2,39)
	-04	.172 (4,37)	.125 (3,18)

MATERIALS			
Component	Material	Finish (YY)	
		Terminal	Brass

SWAGE TOOLING	
Recommended Swaging Tools:-	
Anvil	435-6445-01-00-00
Roll punch	435-6601-01-00-00
Flare Punch	435-6663-01-00-00